



Annual Report

2023

Harnessing the power of shared knowledge and collective action

Contents

From our Co-chairs	3	Ngā Mihi Nui Funders	34
From our CEO	4	Financial Report	35
About Us	5	Connect with Us	37
Our Impact	8		
Key Objectives	9		
Events	11		
Ngā Kaitiaki Our Restoration Projects	13		
Te Whare Tapa Wha	27		
Kaimai Mamaku Forum Projects and Actions	29		
He Waka Eke Noa	33		



From our Co-chairs



Ko lhowaa, te mana, te lhi, te tapu.
Te kaihanganga o Matariki, o Meretuuahi
Kia hiwa raa ki teenei tihi, kia hiwa raa ki teeraa tihi
Whakapuru tonu, whakapuru tonu
Moe araara, ka tau te manu ki runga i te pae
Kia tuu, kia mataaraa

As co-chairs of the Manaaki Kaimai Mamaku Trust, we commend the immense amount of work that has been completed over the past year by all the Kaimai Mamaku Restoration Project (KMRP) whānau. Despite the challenges thrown at you, your resilience and persistence are inspirational. The project has grown in breadth and impact as a result. Your on-the-ground mahi has been supported not only by Jobs for Nature funding, but also by the ongoing support, funding and collaboration of Department of Conservation Te Papa Atawhai (DOC), Bay of Plenty Regional Council Toi Moana (BOPRC) and Waikato Regional Council Te Kaunihera ā Rohe o Waikato (WRC), to whom we express our gratitude and thanks once again.

This year it is encouraging to be able to thank two new funders, TECT and BayTrust, who have demonstrated their support for our landscape-scale mahi, co-governed leadership and iwi-hapū led projects. We look forward to expanding our team of funders in the coming year.

In the past year, Gerry Gardiner (Tauranga Moana) left our Board and we deeply appreciated his knowledge, wisdom and humility. We welcomed two new Trustees, Kevin Palmer (community trustee and treasurer) and Peri Mason (Ngāti Raukawa), who add valued knowledge, perspectives and expertise to our Board. We also wish to acknowledge and thank Ngā Iwi Tōpū | Māori Caucus for their work in bringing iwi representation across the Kaimai Mamaku motu | area to our Board table.

This year our team welcomed the secondment of Brad Angus from DOC, which has been of benefit to our project teams and broadened our ability to support capability building. Our team has worked very hard to maintain trusted relationships, strengthen project teams and expand our stakeholder networks.

Over the past year, trustees have been privileged to see new Stage 1 projects being presented, projects progressing to Stage 2 implementation and projects expanding. The linkages between te taiao | earth projects and social, cultural and health benefits are being realised in myriad ways. Despite the financial challenges we face, we must find a way forward so that the benefits to people and Papatūānuku are not lost.

Once again, we commend the work of the Trust, the KMRP and all its stakeholders and participants to you.



With your collaboration, support and manaakitanga, we can achieve the vision “The Kaimai Mamaku thrives; hence we thrive.”

Mokoro Gillett & Norm Bruning

From our CEO

CEO Report

When the Manaaki Kaimai Mamaku Trust was formed, the Kaimai Mamaku Forum's (the Forum) clear message was *'it's time for action'*. Action in our first year focused on *whiria te tangata | weave the people together*. A shared vision remains essential to working towards collective action. *He waka eke noa | we're all in the waka together* is only possible if all the paddlers commit to the mission and want to travel in the same direction. Last year's report focused on building the organisation and relationships needed to board a waka that had been years in the making and set sail on an intergenerational mission. The results of that early work are now becoming clear.

In our second year, we've seen the number of people, projects and stakeholders on the Kaimai Mamaku waka grow rapidly. This year has been a whirlwind of activity across every area of work, so much so that it's almost impossible to distil it into a short report and convey the sheer quantity, complexity and scope of the action!

We've achieved the significant milestone of fully deploying the Jobs For Nature funding, with funding approved for three new Stage 1 scoping projects, four Stage 2 implementation projects and two project area expansions. We've delivered capability building on diverse topics and provided project support, especially when weather conditions were far from ideal and

impacted on project delivery thanks to Cyclone Gabrielle and the summer that wasn't! And we've expanded our team's capability with the help of Brad Angus, Senior Biodiversity Officer, seconded from DOC, and Rebecca Lee who started on 17 July 2023 as Communications Manager.

We were successful in securing multi-year co-funding from TECT and BayTrust for four Bay of Plenty Projects. We hope to replicate this collaborative funding model with other funders in the coming year. The Joint Agency Partners Committee (JAC) has continued its work with interagency funding to deliver pest control, monitoring and project support across a range of work streams. We've engaged the Forum's collective wisdom on key questions and our stakeholder engagement has been unfailingly positive, resulting in serendipitous conversations, new connections and action.

We ended the year with a real sense of building momentum, increased understanding and collaboration and a stronger sense of the future funding model. The KMRP is one of those uniquely special projects that pulls everyone into its orbit. The more people and organisations who join the waka, the faster we can paddle against the current of biodiversity loss, biosecurity crises and climate change.

There have been numerous highlights to celebrate throughout the year. Meschka's highlight was being successful with a scholarship to commence her Masters

in Environment and Society. Dani had two highlights - the final project proposal (Ngāti Rangiwewehi Stage 1) being approved by the Board and getting to know the project kaimahi, people and whānau the funding is supporting. Brad's highlight was also spending time in the field with kaimahi, learning from them, sharing knowledge, lots of laughs and banter. Witnessing personal growth from the kaimahi has been one of Brad's career highlights. My highlight was being able to convey the co-funding news to the project teams, extending their funding horizon and allowing their projects to expand.

Once again, a heartfelt tēnā koutou and arohanui to our trustees, to our operational team Dani, Meschka, Brad, Fleur and Rebecca, to our whānau at DOC, BOPRC, WRC and Bay Conservation Alliance (BCA), to our restoration whānau across the Kaimai Mamaku motu and to all the kaimahi and kaitiaki of our project teams for the trust you place in us.

Ngā manaakitanga | Best wishes



Louise Saunders



About Us



The Kaimai Mamaku thrives; hence we thrive.



Restoring the mauri of the Kaimai Mamaku.



Harnessing the power of shared knowledge and collective action.

Mahi | Our work



Assurance Partner

For projects and funders, we are your assurance partner. We are currently managing more than \$20m of funding across 12 iwi-hapū led projects.



Knowledge Sharing

He waka eke noa - we are all in this together. We uphold respectful, inclusive, and equitable collaboration, affirming the importance of matauranga | Māori knowledge and science.

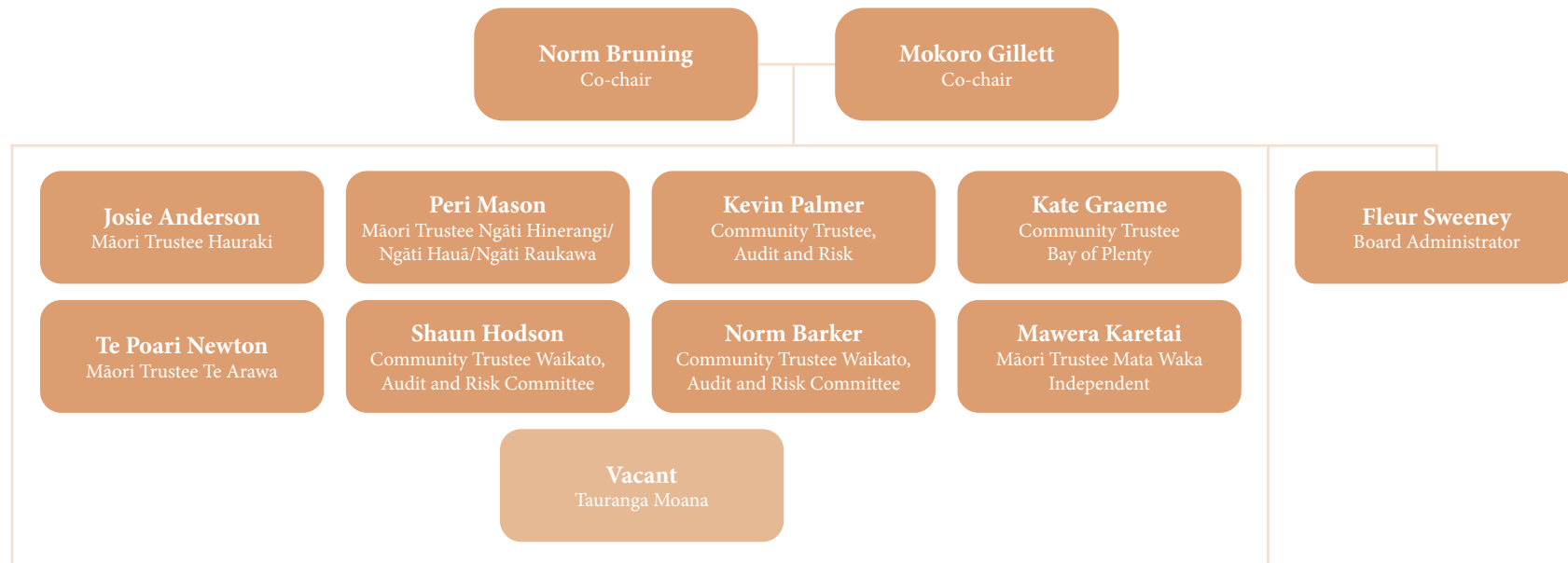


Collective Action

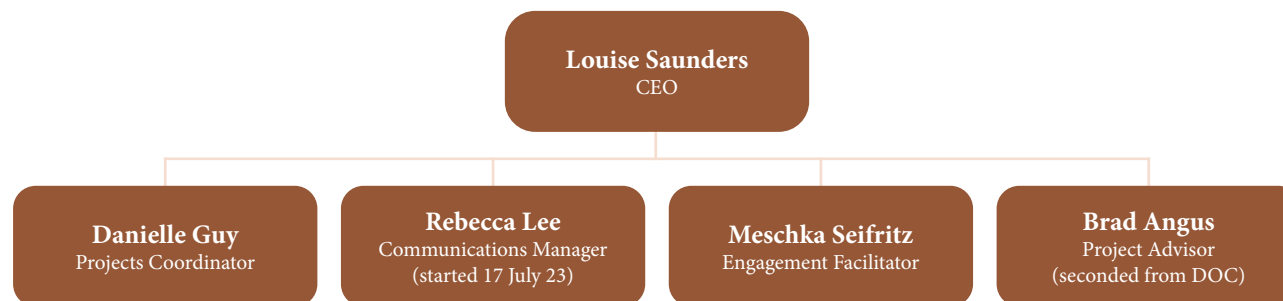
We bring together community groups, iwi-hapū, agencies, and stakeholders from across the 300,000 hectare project area with Kaimai Mamaku Kōrero and an interactive GIS map.

MKMT Team Structure

Governance

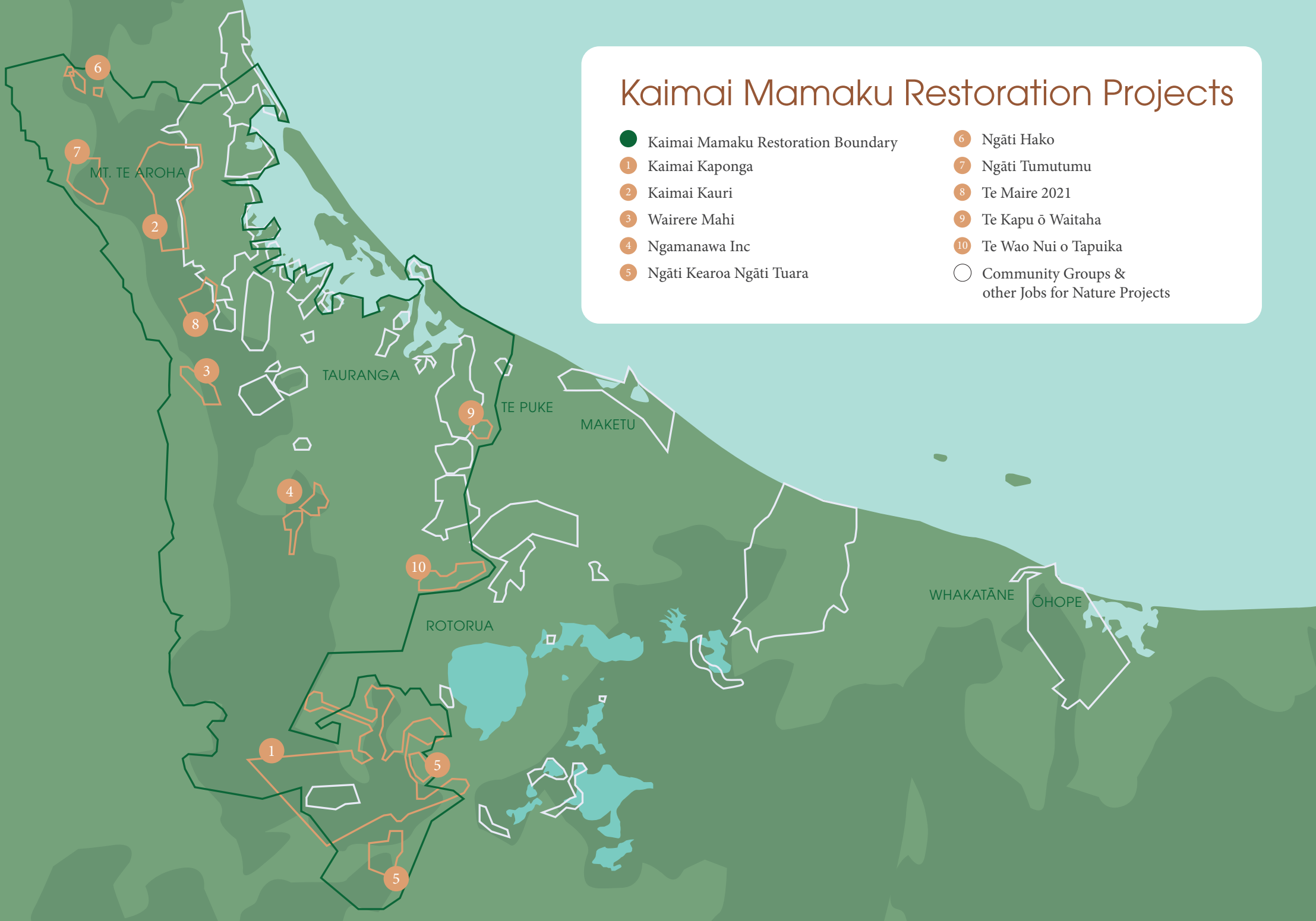


Operations



Kaimai Mamaku Restoration Projects

- Kaimai Mamaku Restoration Boundary
- ① Kaimai Kaponga
- ② Kaimai Kauri
- ③ Wairere Mahi
- ④ Ngamanawa Inc
- ⑤ Ngāti Kearoa Ngāti Tuara
- ⑥ Ngāti Hako
- ⑦ Ngāti Tumutumu
- ⑧ Te Maire 2021
- ⑨ Te Kapu ō Waitaha
- ⑩ Te Wao Nui o Tapuika
- Community Groups & other Jobs for Nature Projects



Our Impact



90

People are employed.

61

Kaimahi received formal training.

<90%

Whakapapa to the rohe they're working on.

2

Project expansions -
Te Whakamaru ō Horohoro and
Te Maire.



2

Mātauranga tools being trialled
for cultural monitoring.

1,130

Terrestrial invertebrate samples
collected and analysed for
Invertebrate Community
Indicator Protocol.



552

Subscribers to the Manaaki
Kaimai Mamaku newsletter.

233

Views per month in the first year
of Kaimai Mamaku Kōrero.



2,151

People saw the Kaimai Mamaku
Kiwi Survey on Facebook.

41%

Increase in Facebook followers.



3

Kiwi heard in the Kaimai
Mamaku Kiwi Survey.

BAY TRUST



2

New funders, Bay Trust and TECT,
extending four projects to the
end of 2025.



10

Stage 2 operational iwi-
hapū led pest control
projects.

639ha

of Pest plant control.

4,825ha

of Pest animal control
infrastructure installed.

>7,101

Bait stations deployed.

5,224

Traps installed.

Key Objectives

Coordinating Restoration Action

The scale of restoration mahi throughout the rohe continues to increase. Building on last year's focus on project establishment, this year we focused on building collective capability and capacity.

- ✓ We funded more projects, project expansions and secured co-funding from TECT and BayTrust to extend project durations.
- ✓ The GIS map, and database of Kaimai Mamaku restoration activity, grew in breadth and depth. We added new projects, monitoring information and data to the platform. In the coming year, data from the upcoming eDNA survey will be added.
- ✓ We are part of the JAC and continue to coordinate agency restoration activities, progress integrated monitoring and work towards a goat eradication plan and learning pathways for hunting.
- ✓ We started the landowner conservation action in eastern Waikato, focused around existing restoration projects.
- ✓ We actively supported the relationships between our projects and neighbouring community groups and continued to fill the kete of knowledge with training on 5-minute bird count monitoring, freshwater invertebrate monitoring, pekapeka monitoring and more.

Community Awareness

Community support is the lifeblood of conservation, whether through volunteer effort, monitoring data, social licence for restoration projects, or advocating for restoration funding. This year has seen a strong emphasis on building community awareness of the collective project activities among a range of audiences.

- ✓ The cornerstone of our public engagement, we launched Kaimai Mamaku Kōrero - a place for all things Kaimai Mamaku - in Sept 2022. This online engagement platform is home to a growing array of content including community conservation groups and Jobs For Nature projects.
- ✓ We continued to build a social media presence for the KMRP, sharing and cross-posting events, news and success stories of partners and projects.
- ✓ 2023 was the second year of the annual Kaimai Mamaku Kiwi Survey, with significantly increased engagement and participation by the community.
- ✓ Alongside DOC, Tauranga Historic Village and Tauranga Moana Biosecurity Capital, we held the Mana o te Taiao Art Exhibition, showcasing art with conservation themes.
- ✓ We showcased conservation through workshops, Matariki events and attended a career expo where we met more than 90 Māori STEM students.

Stakeholder Engagement

MKMT has an engaged network of Forum, community, agency and iwi-hapū stakeholders. Until now, the participation has been limited to maintaining a watching brief on the KMRP as we bedded in funded projects. In the coming year, we hope to see all stakeholders take on a much more active role in a range of areas.

- ✓ Almost all of the Forum Projects and Enabling Actions have been delivered either in their original form, or modified by the Jobs For Nature context. More information on page 30.
- ✓ We continue to host Forum events to keep stakeholders up to date and to benefit from the collective wisdom and network. Many of the collective ideas suggested from these events have been delivered, or are in preparation, including the art exhibition.
- ✓ We continue to engage widely with organisations, stakeholders and agencies from local to national level, across a wide array of restoration issues, ideas and potential collaborations. This includes the Waikato Landowner Activation and JAC work.
- ✓ Engagement with community conservation groups has been especially rewarding this year and we have valued the opportunity to exchange ideas and knowledge as we work towards strong integration across the rohe.



Events

To increase awareness of the KMRP within local communities, we held a number of events throughout the year.



Mana o te Taiāo Art Exhibition

In collaboration with Tauranga Moana Biosecurity and DOC, the exhibition was held at The Incubator Creative Hub between 19th June - 15th July. We encouraged wider whānau participation and engagement through eco-workshops like building bird whare and feeders, creating uku seed bombs and building bug hotels. 576 people visited the exhibition, many who did not already know about the conservation and restoration mahi in the Kaimai Mamaku. Incubator staff and 13 volunteers gave up 95 hours of their time to keep the exhibition open. Although not a focus, there were also some sales – including a first time Rotorua artist who sold a piece for \$1,500. We congratulate and thank all artists who submitted work and kaimahi who ran the workshops.



Kaimai Mamaku Forum

There has been decades of stakeholder, iwi-hapū and community concern, engagement and action to restore the mauri of the Kaimai Mamaku. We acknowledge that whakapapa as providing the symbolic mauri stone from which we launched the Trust's mission. To uphold this mana, we hosted solution-focused events for all Forum members. To involve the wider community and Forum members who may not be able to attend, we also share these events on Kaimai Mamaku Kōrero where we ask pātai | questions and invite all ideas and feedback.



Kaimai Mamaku Kiwi Survey

Kiwi are our national icon and a vital part of our ecosystems. The annual Kaimai Mamaku Kiwi Survey has been developed as an easy way for whānau, friends and the community to volunteer in conservation. With guidance from DOC, participants are asked to sit in the ngahere at dawn for two hours and report back if they saw, heard or spotted any signs of kiwi. The data collected through this annual survey helps with building pest control business cases and identifies locations where kiwi are present and where additional pest control is needed.

More than 2,000 people saw the Kaimai Mamaku Kiwi Survey on Facebook, almost 500 people visited the information page on Kaimai Mamaku Kōrero and approximately 50 individuals and/or groups registered to participate. In incredible news, three kiwi were heard - two of which assumed to be a breeding pair near Hurunui hut!



Wānanga and Training

Conservation is complex and becoming an expert is a never ending journey, there will always be something more to learn from nature. In addition to formal training that the kaimahi undertake through their individual projects, MKMT has provided a number of targeted wānanga to meet the different needs of our project teams.

This year we delivered:

- Five Minute Bird Count training
- Native Bat Monitoring training
- Freshwater Invertebrate training

Ngā Kaitiaki

Our Restoration Projects

The MKMT operations team continues to provide the 12 funded projects with support in budget management, work plans, pest animal/plant control operations, engagement and communications. Specialist advisors in health and safety, GIS data capture and monitoring (e.g. pest and biodiversity) are also available as required to

help teams upskill in these areas.

Quarterly reports are a critical tool to keep track of projects' progress against their work plans and to keep funders informed of challenges and achievements. The MKMT operations team has also supported project

managers in developing detailed budgets and work plans for post-June 2024 so they have detailed proposals to present to future funders. This has encouraged teams to consider their aspirations for the longer term as they will have the opportunity to diversify into a wider array of restoration activities.



Funded Projects	2020-2021	Jul-Sep 2021	Oct-Dec 2021	Jan-Mar 2022	Apr-Jun 2022	Jul-Sep 2022	Oct-Dec 2022	Jan-Mar 2023	Apr-Jun 2023	Jul-Sep 2023
Stage 1: Ngāti Tura Ngāti te Ngakau project scoping	■									
Stage 2: Ngāti Tura Ngāti te Ngakau project delivery – Kaimai Kaponga			■	■	■	■	■	■	■	■
Stage 1: Kaimai Kauri project scoping and ambassador programme	■	■	■	■						
Stage 2: Kaimai Kauri project delivery				■	■	■	■	■	■	■
Stage 1: Ngāti Hinerangi project scoping			■	■	■					
Stage 2: Ngāti Hinerangi project delivery – Wairere Mahi						■	■	■	■	■
Stage 1: Ngamanawa project scoping		■	■	■	■					
Stage 2: Ngamanawa project delivery – Ngā Mata Hiringa						■	■	■	■	■
Stage 1: Ngāti Kearoa Ngāti Tuara project scoping		■	■							
Stage 2: Ngāti Kearoa Ngāti Tuara project delivery – Te Whakamaru o Horohoro				■	■	■	■	■	■	■
Stage 2: Ngāti Kearoa Ngāti Tuara project expansion						■	■	■	■	■
Stage 1: Ngāti Hako project scoping				■	■	■				
Stage 2: Ngāti Hako project delivery							■	■	■	■
Stage 1: Ngāti Tumutumu project scoping			■	■						
Stage 2: Ngāti Tumutumu project delivery					■	■	■	■	■	■
Stage 1: Ngāi Tamawhariua project scoping			■	■						
Stage 2: Ngāi Tamawhariua project delivery – Te Maire					■	■	■	■	■	■
Stage 2: Ngāi Tamawhariua project expansion									■	■
Stage 2: Waitaha project delivery – Ottawa Waitaha a Hei					■	■	■	■	■	■
Stage 1: Tapuika project scoping						■				
Stage 2: Tapuika project delivery							■	■	■	■
Stage 1: Ngāti Hauā project scoping							■	■	■	■
Stage 1: Ngāti Rangiwewehi									■	■



Kaimai Kaponga

Iwi: Ngāti Tura / Ngāti Te Ngakau



Project Area and Location

Planned 38,000-ha in the Southern Kaimai Mamaku Range.



11 FTE kaimahi employed

Targeted Species

- Possums
- Rats
- Mice
- Feral cats
- Wallabies

Highlights

- Successfully delivered an NZQA Level 3 Pest Control Management qualification to eight iwi-hapū groups, with seven of them having projects within the KMRP. Please note: Although outside of this annual report period, all Kaimai Kaponga operational kaimahi completed this course in November 2023!
- Kaimai Kaponga has actively supported forest invertebrate data collection, increasing iwi and hapū capability in science research. This data serves as a valuable indicator of ngahere ora | forest health, allowing for informed decision-making and conservation efforts.
- Implemented an integrated pest-control approach within the Te Pukenga system with the aim to expand the pest-control project area in a cost-effective way. By trialling the best practical option using this approach, the organisation seeks to optimise pest control efforts and achieve effective outcomes.

Funded by



For more information visit

<https://kaimai-mamaku.org.nz/kaimai-kaponga>





Kaimai Kauri

Iwi: Ngāti Te Wai /
Te Whanau a Tauwhao ki Otawhiwhi



Maintained Tracks

- Waitengaue Stream Track
- Lindemann Loop Track
- Wharawhara Tramway Track
- Tuahu Track (East) / Kauri Loop Track

Protected Species

- Kauri



7 kaimahi employed

Advocacy Work

- Kaimai Kauri has developed educational programs tailored to accommodate diverse learning abilities, spanning from 5 year-olds to adults. These programs prioritise the kaupapa of kauri protection, emphasising the significance of forest health and the ecosystem it sustains. An advantageous aspect of these programs is their adaptability to align with schools' teaching objectives for each term. The future goal is to enhance these programs to offer NCEA level credits and align with the New Zealand curriculum standards.
- In collaboration with Tauranga Moana Biosecurity Captial and the facilities at the historic village, Kaimai Kauri established holiday programs aimed at engaging primary school aged tamariki. These programs educate participants on the resources provided by ngahere, such as kai and rongoā | traditional medicine. The educational activities take place in an outdoor setting, with the added benefit of utilising the indoor cinema to screen educational films relevant to the kaupapa.

Highlights

- Kaimai Kauri participated in the Kaurilands Summit held in Whangārei, where researchers from across Aotearoa gathered to exchange and present their findings on kauri ora and myrtle ora. Additionally, a visit to Tane Mahuta was organised as part of the summit.
- Collaboration with the recreational team from DOC involved various tasks such as maintaining walking tracks, clearing vegetation, assessing track conditions and ensuring proper drainage. Furthermore, the

organisation had the opportunity to participate in the 12-week BCA cadetship course offered by BCA, which focused on conservation activities like predator control, pest plant management, native bird and plant identification, maramataka | Māori lunar calendar, biosecurity and water monitoring.

- A significant achievement shared with Kaimai Kauri rangatahi was the acquisition of increased mātauranga regarding their own whenua. This accomplishment was made possible through meaningful time spent in the ngahere with kaumatua and other leaders in various fields. The outcome of this experience was a boost in team confidence, strengthened community networks and enhanced mana within the hapū.

Funded by



For more information visit

<https://kaimai-mamaku.org.nz/kaimai-kauri>





Wairere Mahi

Iwi: Ngāti Hinerangi



Project Area and Location

1,000-ha located in the Western Ranges of the Kaimai Ranges between Wairere Falls and State Highway 29.

 9 kaimahi employed

Targeted Species

- Possums
- Rats
- Mustelids

Highlights

- Working with DOC, Wairere Mahi were able to fly in and restore an ex-DOC hut in the middle of the project area. This enables the kaimahi to stay the night in the ngahere and spend longer on the mahi.
- Successfully completed the initial trap network of 500ha and started work on the second 500-ha block. This expansion will be complete by 2024.
- As a result of dedicated training efforts, all kaimahi are now qualified in Pest Operations (Level 3), Land Based Training. This achievement has significantly enhanced the overall capacity and capability of the team.
- Wairere Mahi has established strong partnerships with neighbouring community groups and businesses. For example, Predator Free Matamata joins Wairere Mahi on one Sunday a month to install the trap network.

Funded by



For more information visit

<https://kaimai-mamaku.org.nz/ngati-hinerangi>





Ngā Mata Hiringa

Iwi: Ngāti Hangarau / Ngāti Ranginui /
Ngāti Raukawa



Project Area and Location

Southern Kaimai Ranges near the Ngatuhua and Waitaia Lodge.

- 180-ha (Waitaia Lodge Block)
- 320-ha (Ngatuhua Block)
- 80-ha (adjacent to Ngatuhua area)

 9 kaimahi employed
(including two contractors)

Targeted Species

- Possums
- Rats
- Feral cats
- Mustelids

Highlights

- Successfully installed a trap network of Good Nature A24 rat/stoat traps in the Ngatuhua area.
- Ngamanawa actively participated in the Māori Water and Fisheries Summit in Taupō, as well as the Kaurilands Summit in Whangārei which allowed valuable networking opportunities and knowledge sharing with others in the conservation field.
- Four kaimahi successfully completed Land Based Training, which covered best practice methods for conservation and emphasised health and safety protocols.
- Trail Cameras were implemented and analysed to collect useful data about pests - identifying an increase in feral cats. This valuable information helped the team to adjust methods and strategies to effectively address the feral cat population and mitigate their impact on the environment.

Funded by



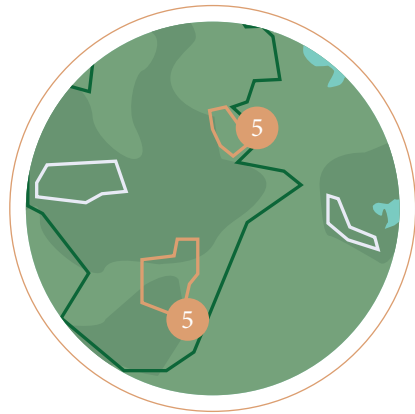
For more information visit

<https://kaimai-mamaku.org.nz/project-nga-mata-hiringa>



Te Whakamaru o Horohoro

Iwi: Ngāti Kearoa Ngāti Tuara



Project Area and Location

- 1,240-ha on Horohoro Maunga
- 180-ha on Te Paiaka block

 4 kaimahi employed

Targeted Species

- Possums
- Rats
- Mustelids
- Feral cats
- Wallabies

Highlights

- The presence of a larger resident population of long-tailed pekapeka on Horohoro maunga was officially confirmed! Thirty automatic bat monitors were running for one month and in certain areas, the pekapeka were recorded feeding and roosting. This incredible news allows the team to concentrate their predator control mahi to protect the taonga species.
- Ngāti Kearoa Ngāti Tuara have developed and nurtured great relationships with adjoining landowners and Te Arawa Lakes Trust, resulting in increased support.
- The team has almost completed the total 1,240-ha pest control network.

Funded by



For more information visit

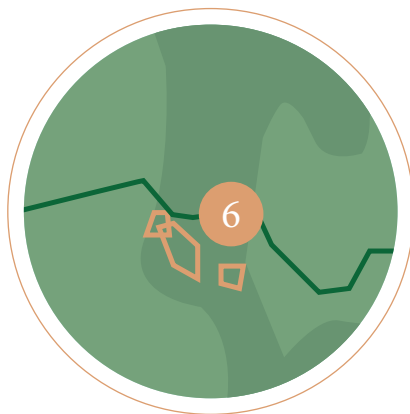
<https://kaimai-mamaku.org.nz/ngati-kea-ngati-tuara>





Ngāti Hako

Iwi: Ngāti Hako



Project Area and Locations

A 1,162-ha block covering:

- Karangahake and Waikino - Pest Plant Control and Restoration Planting
- Waitawheta - Pest Animal Control



6 kaimahi employed

Targeted Species

- Possums
- Mustelids
- Rats

Highlights

- The project commenced pest plant control (primarily bamboo removal) at Owharoa Falls in Waikino and plan to replant the area with native plants and trees. This will provide a new area for the public to safely view the falls. This work has required considerable engagement with key stakeholder groups such as the Council, Hauraki Rail Trail, HELP Waihi and neighbouring landowners.
- The project is planning more pest plant control and restoration planting at the start of the Karangahake track network at Crown Hill.
- To mitigate the risk of spreading kauri disease, the project will also trial a novel pest animal control approach in the Waitawheta Valley. Rather than using the traditional approach of grid mapping traps and bait stations, traps will be concentrated in areas where target species are known to forage and transit. Multi-kill traps, such as the AT220, which do not need to be checked as frequently will also be utilised to reduce the need for kaimahi to enter kauri zones.

Funded by





Ngāti Tumutumu

Iwi: Ngāti Tumutumu



Project Area and Location

A 600-ha land block in the North Western section of the Kaimai Ranges forest, above Te Aroha.

 9 kaimahi employed

Targeted Species

- Wild Ginger
- Japanese Honeysuckle
- Ivy
- Tradescantia
- Climbing Asparagus
- Wilding Pines

Highlights

- The project identified a healthy population of tradescantia leaf beetles which eat down the tradescantia plant (commonly known as inch-plant or wandering willy). This allows the team to focus culling efforts on other pest plants. The population is so healthy that the Waikato Regional Council now collects the beetle from here to distribute to other areas.
- The 2022/2023 financial year had incredibly testing weather conditions but this didn't stop Ngāti Tumutumu! They pivoted when necessary, supporting nearby projects and community groups with track maintenance, pest control and planting. They also worked alongside Matamata Piako District Council and Kaimai Valley Services staff in the aftermath of Cyclone Gabrielle, clearing debris and providing a Civil Defence base at their marae.
- A significant goal was to create employment opportunities for whānau and iwi members, enabling them to return to their whenua. Initially, only one person was employed on a full-time basis and now, Ngāti Tumutumu has a team of nine staff members. As a result, whānau are now residing and working within the community, while their tamariki attend local schools.
- The team also started to test ways to regenerate the soil at the historical Tui mine site - known as the worst ecological site in Aotearoa New Zealand. They have used focus sites to place mulch, manure and other fertilisers and planted seedlings to test growth rates.

Funded by



For more information visit

<https://kaimai-mamaku.org.nz/ngati-tumutumu>





Te Maire 2021

Hapū: Ngāi Tamawhariua



Highlights

- Two rangatahi, who whakapapa to Ngāi Tamawhariua, started as volunteers but after completing the BCA Cadetship Course they were hired for full time positions.
- Successfully established a comprehensive trap network across the initial 500-ha project area. Due to this success, the project has doubled in size and the team is implementing the same system in the second 500-ha block.
- Both landowners and community members have expressed their appreciation as they have observed an increase in bird song and a reduction in pest populations on their respective properties.

Funded by



For more information visit

<https://kaimai-mamaku.org.nz/te-maire>

Project Area and Location

A 1,000-ha block located in the southern section of the Kaimai Ranges near Aongatete.

 6 kaimahi employed

Targeted Species

- Possums
- Rats
- Mustelids



Te Kapu Ō Waitaha

Iwi: Waitaha



Project Area and Location

A 400-ha block in the central section of the Otanewainuku-Otawa area.

 2 kaimahi employed

Targeted Species

- Possums
- Rats
- Mustelids

Highlights

- Waitaha was invited to the Oceania Ranger Forum in Rotorua which featured informative presentations showcasing the dedication and passion of individuals in the field of conservation. During the event, Waitaha became a member of the newly established group, Ranger's of New Zealand, where kaimahi can discuss successes and challenges of the mahi.
- Kaimahi have all participated in diverse conservation courses including bird song identification, rākau identification, rongoā, presentation skills, waterway testing, Level 3 Pest Management, genomics and kiwi releases.
- The project team pride themselves in collaboration and have relationships with other kaitiaki, DOC and local schools.
- All kaimahi attended the Kaurilands Summit in Whangārei which connected researchers, mana whenua, community, industry and government staff in the areas of kauri and myrtle ora. Here, the team networked with Waitangi Woods and gained insights into additional funding mechanisms for the future of their project.

Funded by



For more information visit

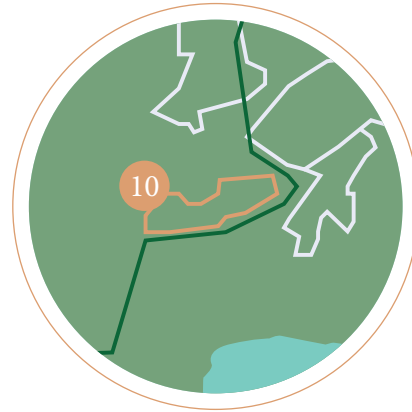
<https://kaimai-mamaku.org.nz/waitaha>





Te Wao Nui a Tapuika

Hapū/Iwi: Tapuika



Project Area and Location

A 500-ha block in the Te Matai Forest.



6 kaimahi employed

Targeted Species

- Possums
- Rats
- Feral cats
- Mustelids

Highlights

- All field kaimahi successfully completed the BCA Cadetship Course, enhancing their skills and knowledge in conservation.
- The project progressed into operational Stage 2, situated within the Tapuika rohe. This strategic placement aligns with the broader vision of establishing an ecological corridor for Kōkako, connecting restoration areas of Otanewainuku Kiwi Trust and Kōkako Ecological Expansion Project (KEEP).
- Tapuika have actively fostered strong relationships with neighbouring conservation entities and rōpu, recognizing the value of shared knowledge and collaboration in achieving their conservation goals. These grounded relationships serve as a foundation for collective efforts towards environmental preservation and restoration.

Funded by



For more information visit

<https://www.facebook.com/tapuikanz>





Ngāti Hauā

Hapū/Iwi: Ngāti Hauā

“ In the 2022-2023 Annual Report, we highlight our small effort in the establishment of another project to add to the wider commitment to improve the mauri of our Kaimai. Established post-Treaty settlement in 2013, Ngāti Hauā Iwi Trust (NHIT) represents around 7,275 tribal members and holds a deep-rooted historical connection with the Kaimai Mamaku region. In October 2022, NHIT received seed funding for Stage 1 from the Manaaki Kaimai Mamaku Trust, enabling the NHIT to focus on three core issues: pest animal presence, risks to taonga species and minor pest plant concerns. Despite delays due to weather events, this period allowed for more comprehensive planning, including the hiring of a Project Team Leader and the adoption of a name for the project, Te Māhuri.

The Phase 2 project aims to expand upon the initial objectives by covering a 600-ha area over three years. Goals include pest eradication, monitoring of taonga species and mapping of rongoā plants, among others. Collaboration with Wairere Mahi from Ngāti Hinerangi has been established, owing to the shared interests and history in the project area. Metrics for success have been defined as, trap catches for pest control to employment opportunities for Ngāti Hauā whānau. Monitoring protocols are in place for each goal, including but not limited to, bi-annual and quarterly assessments for pest control, annual tracking of employment rates and one-time development of a rongoā mapping system and assessment of the overall forest ecosystem health. This detailed planning aims to ensure that the project not only meets but exceeds its objectives, ultimately restoring the mauri of the Kaimai Mamaku area.

- Arihia Moore (Ngāti Hauā)





Ngāti Rangiwewehi

Hapū/Iwi: Ngāti Rangiwewehi

“ The Mangorewa-Kaharoa Forest was once a coveted location for bird-snaring and spearing of kākā, while the Mangorewa Stream was well-known for its tuna | eel populations. These resources were key to the ongoing survival of the people of Ngāti Rangiwewehi. Today, despite the disruption from pest species as well as major land use change in the surrounding area, it is believed a remnant kiwi population survives.

We have secured funding for Stage 1, which enables the project team to identify key threats and taonga species and plan a restoration project within the 3,246-ha Mangorewa Kaharoa Te Taumata block.

- Te Whaeoranga Smallman
(Ngāti Rangiwewehi)



An aerial photograph of a dense, vibrant green forest. In the center of the image, there is a large, solid orange circle. Inside this circle, the text "Te Whare Tapa Wha" is written in a clean, white, sans-serif font, arranged in two lines. Surrounding the orange circle is a decorative white line-art border with intricate, swirling, and feather-like patterns, reminiscent of traditional Māori art. The background of the entire page is the forest, with a small stream visible at the top and bottom edges.

Te Whare
Tapa Wha

Te Whare Tapa Wha

While restoration is our key focus, on-the-ground kaimahi have reported momentous enhancement of their overall health and wellbeing.

According to the leading Māori health model - Te Whare Tapa Wha - te Taiao is recognised as the foundation of Māori health and wellbeing, with spiritual, mental, physical and social wellbeing as the four walls that keep our whare strong. To ensure overall health and wellbeing, all pillars need to be looked after equally.

Taha Wairua | Spiritual Wellbeing

Kaimahi have reconnected with whenua and traditional mātauranga Māori directly from the iwi-hapū they whakapapa to. Kaimahi regularly mention they feel a deeper connection to their tīpuna.

“ I had never been in the bush but going up for the first time I felt it all, all the wairua. It felt like I was supposed to be there. That’s why I keep coming back every day. ”

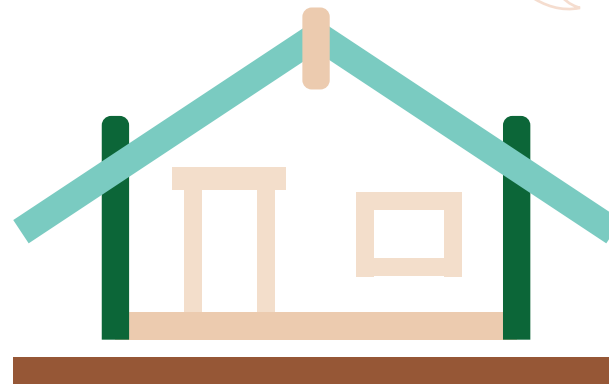
- Kaimahi mō te Taiao.

Taha Hinengaroa | Mental Wellbeing

In many cases, kaimahi left previous employment where they had little fulfilment, felt culturally unsafe or worked alone. This mahi provides daily opportunities for kaimahi to practise tikanga with their whānau and have a direct impact on future generations. Many kaimahi have expressed noticeable improvements in their overall mental wellbeing since joining the KMRP.

Taha Tinana | Physical Wellbeing

On an average day, kaimahi hike more than 10km through dense bush with 12-40kg backpacks. Some project teams have started fitness groups and have goals to drop unhealthy habits, like smoking, to enhance their physical capabilities. Health and safety in the ngahere is covered by both mātauranga Māori protocols and health and safety plans developed with Samson Safety NZ.




Whenua | Land, Roots

Almost 90% of employees whakapapa to the whenua they work on.

Taha Whānau | Social Wellbeing

Kaimahi who work together in the ngahere have become closer through daily kōrero, knowledge sharing and interests.



Kaimai
Mamaku Forum
Projects and
Actions

Projects

Forum Actions

Achievements

1. Kaimai Mamaku pest management

- | | |
|--|---|
| 1.1 Contract Pest Management Specialist | • Cam Speedy's 2019 pest management plan provided an approach to guide operations. |
| 1.2 Establish a pest control working group | • Ten project operational plans were developed, including four new Stage 2 projects. |
| 1.3 Collate and map information | • Operational plan implementation is well underway, including two expansion areas and two projects in their third year of operations. |
| 1.4 Issues & Options Report | |
| 1.5 Shortlisted Options | • Implementation includes pest animal control, pest plant control, kauri hygiene and monitoring. |
| 1.6 Engagement on Options | • Co-funding has been secured for four projects, extending operations to the end of 2025. |
| 1.7 Pest Management Plan | |
| 1.8 Plan Implementation | |

2. Collaboration by connecting people and places

- | | |
|--|---|
| 2.1 Continued engagement within potential corridors/networks | • Ngā Iwi Tōpū provides mana whenua representation and engagement with Manaaki Kaimai Mamaku Trust. |
| 2.2 Continued engagement with tangata whenua | • The development of iwi-hapū capability and capacity in conservation projects has led to increased pest control implementation across 12 projects and two project expansions. |
| 2.3 Engagement with landowners adjacent to Kaimai Mamaku Ranges | • Planning for engagement with Waikato landowners in restoration activity has progressed and implementation will commence in the next financial year. |
| 2.4 Identify potential corridors/networks | • Diverse work is under way on engaging, connecting and collaborating including Te Maire/Aongatete Forest Project connecting across the ridgeline to Wairere Mahi and Ngāti Hauā, the goat eradication project and building capability and capacity for conservation hunting. |
| 2.5 Connect people and projects within potential corridors/networks. | |

3. Showcase the Kaimai Mamaku ranges and Forum

- | | |
|---|---|
| 3.1 Connect local communities | • Communicating the KMRP scale and scope to a wide audience has continued across a number of digital channels. |
| 3.2 Share information regionally and nationally | • Forum events were held to benefit from knowledge sharing in identifying potential solutions and action for pressing issues. |
| 3.3 Annual presentation to elected members | • Project signage has been installed at public tracks to raise awareness of project restoration work in the ngahere, with more planned. |
| 3.4 Biennial Forum Symposium | |
| 3.5 Greater visual recognition | • We began work on gaining national recognition through association with the Sustainable Business Network. |

Enabling actions

Forum Actions

Achievements

Information Collation and Mapping

- | | |
|------------------------------|---|
| I1 Collate information | <ul style="list-style-type: none"> • A work in progress, the GIS database is continuously updated and new data added with a dashboard showing real-time progress against key metrics. |
| I2 Map information | |
| I3 Update/overhaul website | <ul style="list-style-type: none"> • The Trust's website provides accurate information on our strategy, history and the unique biodiversity of the Kaimai Mamaku. |
| I4 Online dashboard | <ul style="list-style-type: none"> • Kaimai Mamaku Kōrero, a dedicated online engagement platform, was launched and is now home to a wide range of restoration-related content for projects, collaboration, research and outcomes. |
| I5 Continue updating website | <ul style="list-style-type: none"> • In the coming year, significantly more content will be added to Kaimai Mamaku Kōrero to provide a unified profile and voice for the Kaimai Mamaku. • Our social and digital channels work together to enable responsive and dynamic engagement across the entire project area. |

Research and Monitoring

- | | |
|--|--|
| R1 Integrated monitoring programme | <ul style="list-style-type: none"> • Project teams are implementing results monitoring and continue to build capability in biodiversity monitoring. Tailored monitoring plans are being developed and implemented for each project. |
| R2 Cultural health indicators | <ul style="list-style-type: none"> • The JAC Monitoring Working Group has collated collective monitoring data sources and will identify strategically important data gaps to be filled by future monitoring. |
| R3 Partnerships with others | |
| R4 Support research and monitoring by others | <ul style="list-style-type: none"> • BOPRC has commissioned data analysis for vegetation monitoring, demonstrating the measurable impact of browsing pests on forest composition. |
| R5 Updated State of the Environment Report | <ul style="list-style-type: none"> • MKMT partnered with Open Waters Aotearoa Wai Tuwhera o te Taiao to develop an eDNA monitoring programme. It will be implemented in the coming year. • The Ngahere Ora tool for digitising cultural health and mātauranga indicators will be developed over the next financial year with Te Maire. |

Communications, Coordination and Resourcing

- | | |
|----------------------------------|---|
| C1 Forum mailing list | • MKMT has extended the role envisaged for the Forum Coordinator, doing extensive positive engagement across the rohe and conservation sector. |
| C2 Keep Forum members up to date | • Successful acquisition of co-funding and continued engagement with current funders for the resourcing and extension of the KMRP. |
| C3 Forum Coordinator role | • Positive feedback and active engagement across all social media channels. |
| C4 Funding calendar | • 610 newsletter subscribers receive Kaimai Mamaku updates, communication and announcements directly to their inboxes. This list is increasing. |
| C5 Funding options | • Recruited a Communications Manager role to further support communication efforts, they started 17 July 2023. |

Strategic Planning and Influence

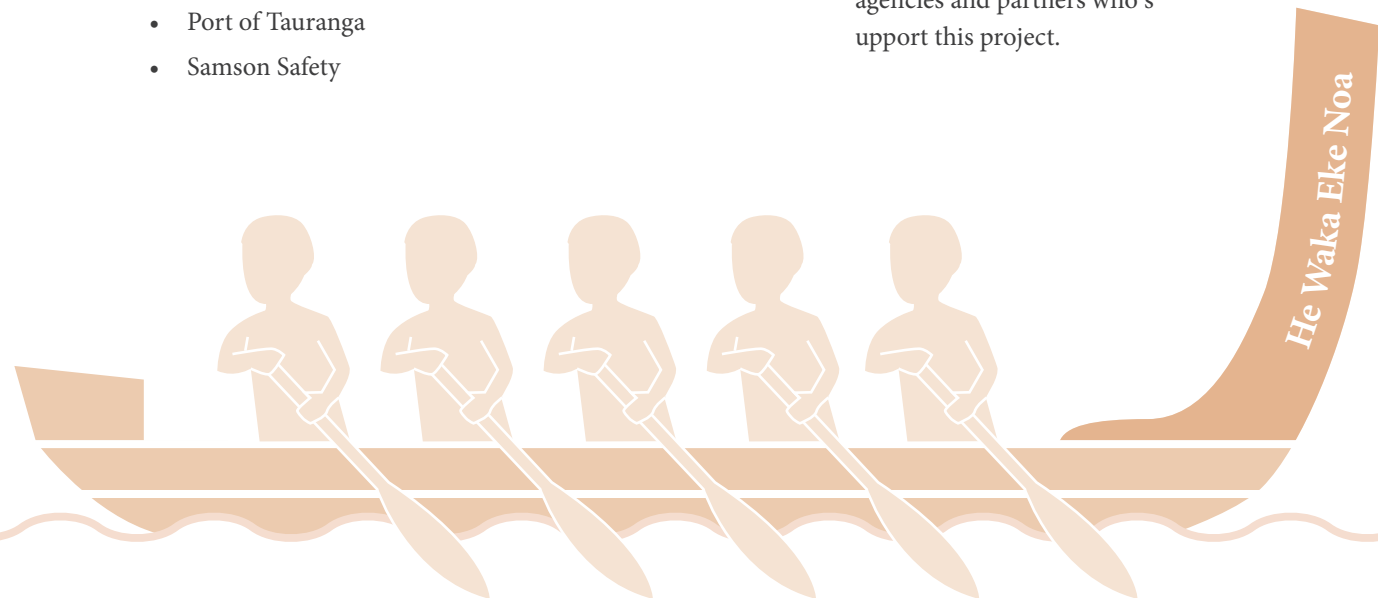
- | | |
|---|--|
| S1 Forum Steering Group | • MKMT continues to deliver on the role of the Steering Group and strengthen its governance function, co-governance practice, risk management and identification of opportunities. |
| S2 Review Terms of Reference | |
| S3 Identify ways to raise profile and influence | • Continuing to raise the profile of the KMRP across both regions and at a national level with Forum members and a diverse range of stakeholders and agencies. |
| S4 Forum input/submissions | • Completed the Jobs For Nature Deep Dive Learning Review, providing much needed balance for the Secretariat's metrics on project outcomes. |
| S5 Capacity building | • Engagement with MPs has increased political understanding of the issues and opportunities of landscape scale restoration and the role of mana whenua in restoration delivery. |



He Waka Eke Noa

We thank all of the wider ropū who have helped paddle the KMRP waka through collaboration, shared knowledge and connection:

- Raukūmara Pae Maunga Restoration Project
- Bay Conservation Alliance
- Ōtanewainuku Kiwi Trust
- Tauranga Moana Biosecurity Capital
- Predator Free New Zealand
- Predator Free Matamata
- Sanctuary Mountain Maungatautari
- Waitao Streamcare Group
- Lund Road Care Group
- Forest and Bird
- Western Bay of Plenty Regional Council
- Matamata Piako District Council
- Rotorua Lakes Council
- NZ Deerstalkers Association
- Aongatete Forest Project
- Waikato Biodiversity Forum
- GoECO
- NZ Landcare Trust
- HELP Waihi
- Project Parore
- Kaimai Ridgeway Trust
- Ethos Environmental
- Port of Tauranga
- Samson Safety
- Wingspan Bird's of Prey Trust
- Friends of the Blade
- Te Whakakaha Trust
- EnviroHub
- Tiakina Kauri
- Ngā Whenua Rāhui
- Environmental Protection Authority | Wai Tuwhero o te Taiao
- Mokaihaha Kokako Trust
- And so many other iwi-hapū, agencies and partners who support this project.



Ngā Mihi Nui Funders





Financials

Statement of Financial Performance

For the 12 months ended 30 June 2023

	\$	\$
	2023	2022
Revenue		
Grants, donations, fundraising and other similar revenue	5,983,204	1,698,416
Interest, dividends and other investment revenue	28,518	365
Total Revenue	6,011,722	1,698,781
Expenses		
Volunteer and employee related costs	346,829	180,476
Costs related to providing goods or service	5,400,473	1,355,821
Other expenses	235,902	161,979
Total Expenses	5,983,204	1,698,276

Notes to Financial Statements

- Grant funding is recognised when the conditions attached to the grant have been complied with. Where there are unfulfilled conditions attaching to the grant, the amount relating to the unfulfilled conditions are recognised as a liability and released to revenue as the conditions are fulfilled.
- All transactions in the Performance Report are reported using the accrual basis of accounting.
- These financial statements have been audited.

Statement of Financial Position

As at 30 June 2023

	\$	\$
	2023	2022
Current Assets		
Bank accounts and cash	3,225,398	1,033,471
Debtors and prepayments	23,450	2,548,396
Other Current Assets	34	34
Total Current Assets	3,248,882	3,581,901
Property, Plant & Equipment		
Furniture & Fittings	6,792	6,453
Motor Vehicles	46,393	66,276
Office Equipment	1,606	3,212
Total Property, Plant & Equipment	54,791	75,941
Current Liabilities		
Creditors and accrued expenses	304,461	700,626
Other current liabilities	6,034	8,679
Unused donations and grants with conditions	2,941,686	2,921,468
Non-current liabilities	22,458	26,551
Total Current Liabilities	3,274,639	3,657,324
Total accumulated funds	29,035	517

Connect with us



www.mkm.org.nz



www.kaimai-mamaku.org.nz



www.facebook.com/ManaakiKaimaiMamakuTrust



www.instagram.com/manaakikaimaimamaku/



www.linkedin.com/company/manaaki-kaimai-mamaku-trust



info@mkm.org.nz

